



# *Marine Invertebrate Cultivation*

## CONTRACT RESEARCH AND CONSULTANCY

*CEFAS Conwy provides expert advice, consultancy and research in the biology and cultivation of molluscs, crustacea, marine invertebrates and algae for the aquaculture, pharmaceutical and biotechnology industries*



---

LIVE CULTURES OF SOURCE MATERIAL FOR  
BIOTECHNOLOGY AND PHARMACEUTICAL INDUSTRIES  
IMPROVING EFFICIENCY AND PROFITABILITY  
OF AQUACULTURE OPERATIONS  
STARTING NEW OR UPGRADING EXISTING FACILITIES  
UNDERTAKING ENVIRONMENTAL ASSESSMENTS  
AND APPRAISALS  
ADVISING ON SHELLFISH HEALTH AND SAFETY

---

### *Experience and Expertise*

We offer our clients impartial, reliable consultancy services based upon leading edge scientific expertise and comprehensive technical facilities. You are assured of the quality and integrity of our work.

Our active research programme ensures the quality and relevance of our advice. We support multi-disciplinary teams of experienced scientists to research any aspect of invertebrate aquaculture.

### *Live cultures of source material for biotechnology and pharmaceutical industries*

CEFAS offers a range of services. We can:

- cultivate potential source materials to enable bioproducts to be comprehensively evaluated;
- assess the feasibility of cultivating natural source organisms in intensive operations;
- investigate and evaluate culture conditions and requirements that provide optimum growth and yield;
- undertake mass culture of selected species;
- investigate methods of improving reliability in production and standardisation of bioproduct.



### *Improving efficiency and profitability of aquaculture operations*

CEFAS can advise on methods to improve both intensive and extensive aquaculture operations.

#### *For intensive operations we can advise on ways to:*

- improve yields;
- reduce losses;
- increase reliability of production;
- facilitate out-of-season production.

#### *For extensive operations we can advise on:*

- stock enhancement;
- habitat creation and artificial reefs.

### *Starting new or upgrading existing facilities*

- Feasibility studies and site surveys.
- Advice on site selection and design of production facilities.
- Advice on complying with regulations.
- Evaluating options for diversification.
- Project development and management.
- Technical risk assessment and trouble-shooting.
- Training, consultancy and on-going technical support.

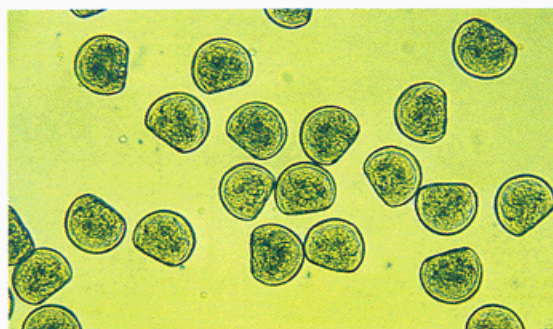
### *Environmental assessments and appraisals*

We thoroughly understand regulatory processes and can help businesses to comply with legislation. We offer:

- environmental impact assessments;
- advice on mitigation measures following habitat damage or loss;
- advice on complying with controls on effluent and discharges;
- bioassays for assessing water quality.

### *Shellfish health and safety*

- Quarantine for the introduction and assessment of exotic species.
- Welfare of live shellfish in holding and transportation systems.
- Shellfish nutrition and physiology.



### *Successful track record*

CEFAS has over 30 years experience in:

- mollusc cultivation, hatchery and nursery technologies, including development of innovative techniques for broodstock conditioning, larval and juvenile rearing and on-growing;
- other invertebrate and algae production;
- crustacean aquaculture technologies for a wide range of marine and freshwater species from temperate and tropical regions;
- development and operation of temperate and tropical marine recirculation systems.

### *CEFAS Conwy Laboratory*

The CEFAS Conwy Laboratory is a fully equipped marine research laboratory with access to continuous supplies of defined quality seawater.

#### *Facilities include:*

- controlled environment tank rooms
- specialist, yet flexible hatchery and nursery facilities for a wide range of aquatic invertebrate species
- large, outdoor tanks for mesocosm experiments
- local marine site for pilot scale on-growing trials
- full analytical and laboratory support
- automatic monitoring and recording equipment for behavioural studies
- internationally recognised collection of commercially important marine microalgae species
- broodstocks of molluscs, crustacea and algae

*For further information about any of our services or to discuss your needs with one of our specialists please contact*

